

# VERTICALE Implant portfolio

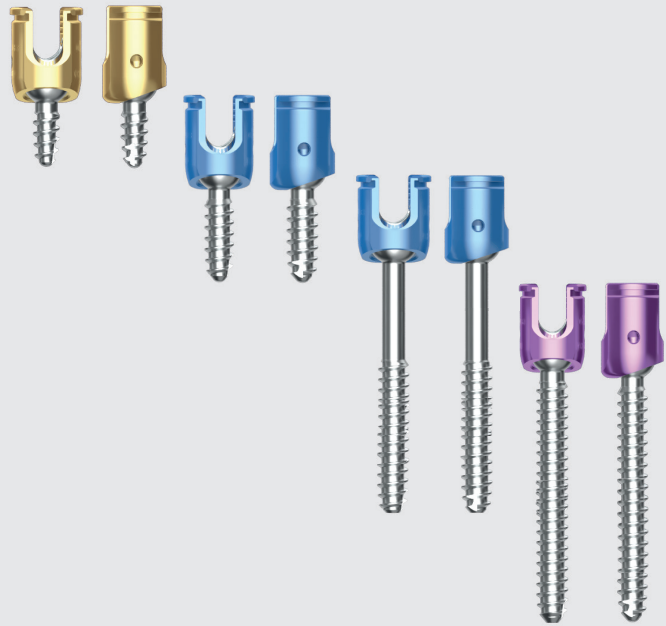
## Pedicle screw

Diameter: 3.5 mm  
 Length: 10-30 mm  
 Type: polyaxial / FA (far angle)  
 Shaft: solid

Diameter: 4.0 mm  
 Length: 14-56 mm  
 Type: polyaxial / FA (far angle)  
 Shaft: solid/cannulated

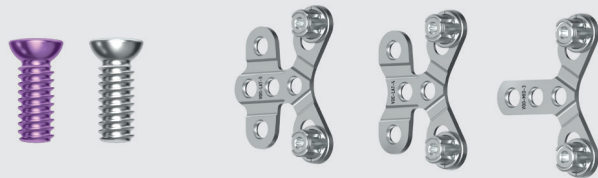
Diameter: 4.0 mm  
 Length 20-36 mm  
 Type: polyaxial / FA (far angle)  
 Shaft: smooth, solid/cannulated

Diameter: 4.5 mm  
 Length: 20-55 mm  
 Type: polyaxial / FA (far angle)  
 Shaft: solid/cannulated



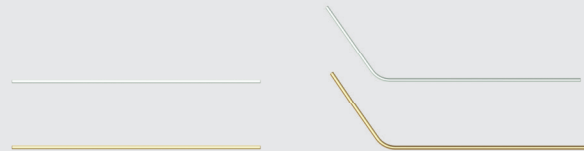
## Occiput implants

Plate type: midline / lateral  
 Screw diameter: 4.5 and 5.2 mm



## Rod portfolio

Diameter: 3.5 and 4.0 mm  
 Length:  
 - 60, 120 and 240 mm (straight)  
 - 200 mm (prebent 55°)



## Cross connector

- 3 sizes: 28-33 mm, 32-41 mm, 40-57 mm



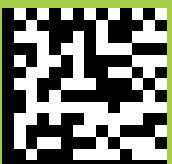
## Connectors / connection thoracal

- Transition rods (5.5/3.5 mm and 5.5/4.0 mm)  
 - Inline and triangle connector  
 - Offset-Connector



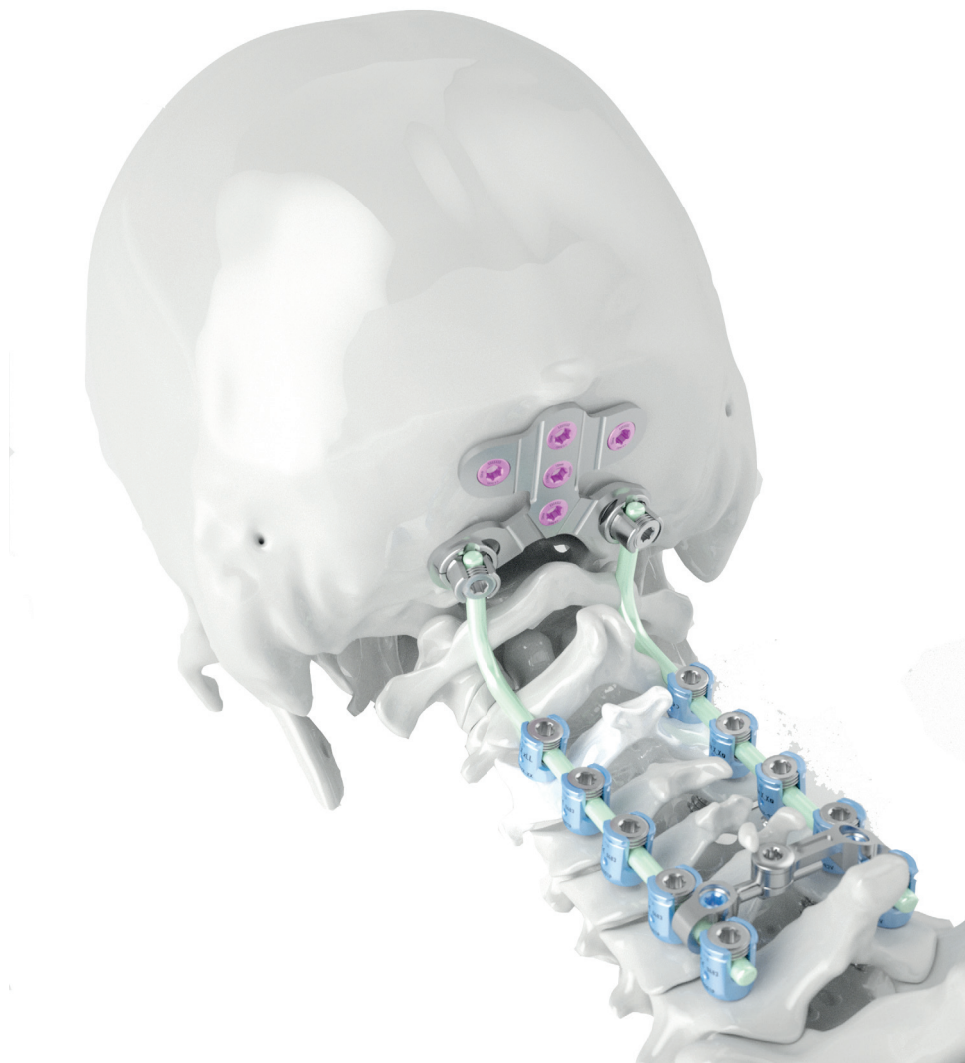
 Silony Medical GmbH  
 Leinfelder Straße 60  
 70771 Leinfelden-Echterdingen  
 Tel +49 711 78 25 25 0  
 Fax +49 711 78 25 25 11  
[www.silony-medical.com](http://www.silony-medical.com)

 [elabeling.silony-medical.com/contact](mailto:elabeling.silony-medical.com/contact)



# VERTICALE<sup>®</sup> CERVICAL THE CERVICAL AND OCCIPUT SCREW ROD SYSTEM

PROVEN - COMBINED AND OPTIMIZED



MADE IN GERMANY

# BENEFITS OF THE VERTICALE CERVICAL SYSTEM

## Evaluated and meaningfully optimized

VERTICALE Cervical is a dorsal fixator for stabilization of the cervical spine with optional occipito-cervical fusion. VERTICALE Cervical completes the treatment of the entire spine and can be connected to the proven VERTICALE System with appropriate implants.

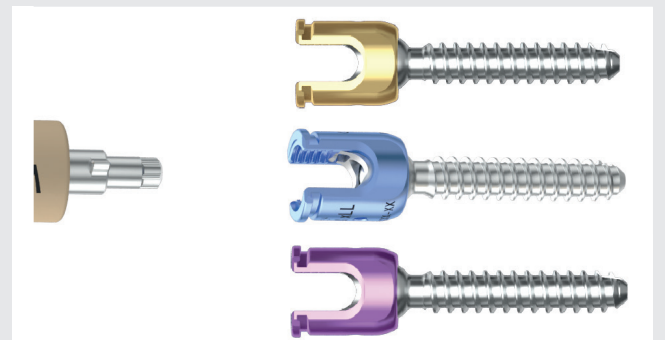
The VERTICALE Cervical System has been developed together with clinical experts in order to optimally meet the requirements of any user. Care has also been taken to ensure that familiar functions from VERTICALE Open reappear in VERTICALE Cervical to minimize the learning curve.

The system has been designed in a modular fashion. Thus is clear and easy to use by OR personnel, and can be tailored to every user's needs and surgical requirements.



## Instruments designed according to your needs

All pedicle screwdrivers and instruments suitable for all VERTICALE Cervical screw types. All screws are equipped with a Torx drive to ensure optimum control and reduce toggling.



Angled occiput instruments for challenging access to plate and screw placement even in difficult anatomical conditions.



## The uniqueness of our screws

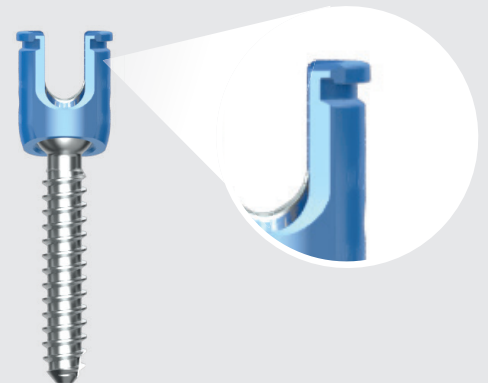
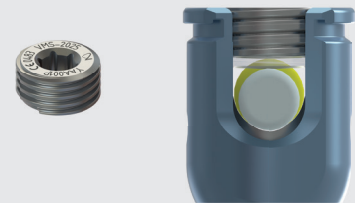
14 screw types and over 180 screw sizes in diameters of 3.5, 4.0 and 4.5 mm are available.

The set screw thread allows easy application and reduces screw head spread for reliable rod clamping. The same tulip allows 3.5 mm or 4.0 mm rods to be accommodated.

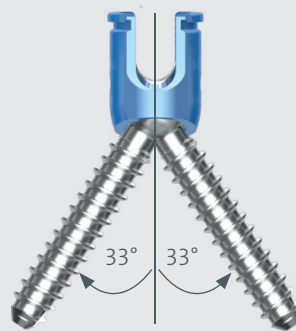
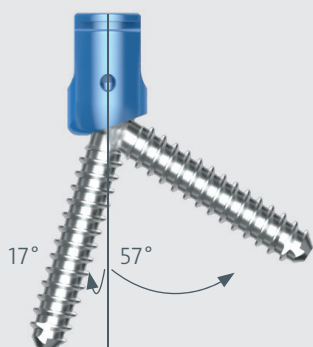
On the upper outer edge of the tulip is a hook-shaped notch that allows a firm connection with instrumentation (e.g. reduction instruments).

The high deflection of the polyaxial screw head (angulation  $40^\circ$ ) serves to ideally adapt to the patient's anatomical conditions. For more difficult anatomical conditions, an FA screw (far angle, preferred deflection  $57^\circ$ ) is available.

The single thread of the pedicle screw ensures optimal bone anchorage in the pedicle. The self-tapping screw tip with the distal gate on the shaft ensures a good initial attachment and supports the insertion of the screw.



FA screw



Poly screw

